

UPMC *My*Health Saint Francis

UPMC is proud to lend its world-class academic medical center expertise as the clinical provider for the students of Saint Francis University.



MyHealth Saint Francis earned the prestigious National Committee of Quality Assurance (NCQA) designation for patient-centered connected care

MyHealth Saint Francis embodies a holistic, central hub for multiple aspects of care, including:

- Acute illnesses and minor injuries
- Allergy Shots
- Coordination of health care services
- Health and wellness education
- Preventive services, i.e., immunizations, blood pressure checks, tuberculosis screenings
- Lab testing

SOAR
Summer Orientation & Academic Registration

UPMC *My*Health Saint Francis

The *My*Health Saint Francis Clinic is one of the many services on campus covered by the University's Health Services fee.



- Services for acute illnesses and minor injuries will be provided at no charge to the student, regardless of insurance.
- Prescriptions and send out lab tests are sent through the student's insurance and could incur applicable co-pays & fees
- Fees are associated with some vaccines and lab work required for students who Study Abroad or required by the student's area of study. (PPDs, Titters)

On Site Care and Telemedicine Technology

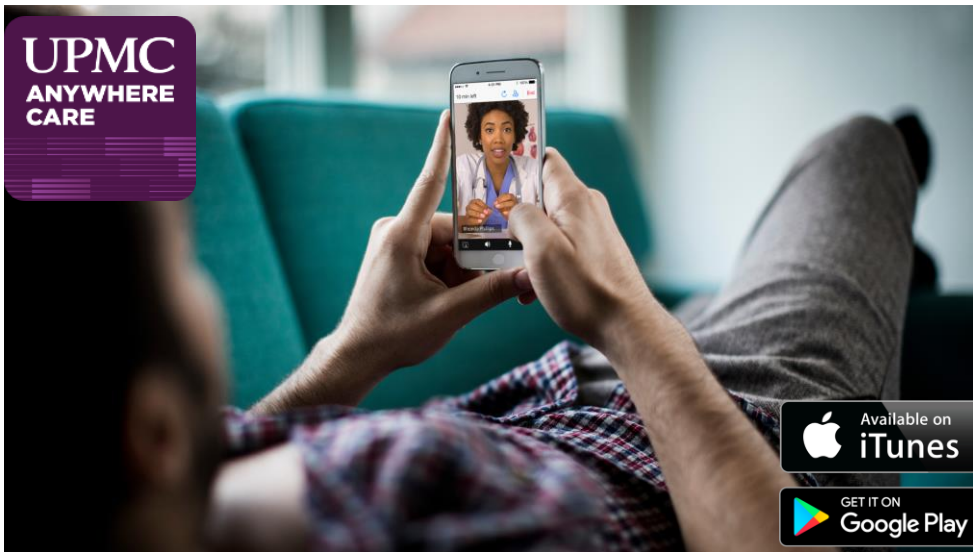


- Your On-Site Provider:
 - CRNP – Bethany Prince- Mondays and Thursdays*
- Telemedicine Services --A UPMC Advanced Practice Provider (APP) conducts a virtual exam of the student in the clinic, with assistance from our medical team at **MyHealth Saint Francis** using camera-equipped tools.
- Student's requiring the services of a PCP or for monthly medication maintenance can be seen by Dr. Andrew Mulhollen and his associates on Wednesdays. **These services are billed through student's insurance** by Dr. Mulhollen's home office.

*Clinical oversight is provided by a UPMC Board- Certified Physician.

UPMC *My*Health Saint Francis

There's an App for Afterhours Care



- Wait time averages 5 minutes
- Average patient rating is 4.9 out of 5 stars
- Prescriptions can be sent directly to the pharmacy of your choice
- **There are fees for afterhours care, approximately \$60** – Less, if you are a UPMC Health Plan member

Commonly Asked Questions About...

- Sick Visits & Injuries
- Medications & Immunizations
- Laboratory Tests
- Mainline Pharmacy-Convenient prescription delivery to campus
(814) 886-5667

Hours of Operation: Monday-Friday 7:30 – 4 PM

Location: DiSepio Institute for Rural Health and Wellness

Contact Us: Phone (814)472-3008 and Fax (814)472-3905

Email: StudentHealth@francis.edu

Online: francis.edu/Student-Health-Center