



# Career Outcomes/Class of 2025

## First Destination Report



**Jacob Garrity**

SFU December 2025 Grad  
Double Major: Engineering &  
Computer Science  
Employed with Tesla



# Class of 2025 Career Outcomes

## First Destination Report Executive Summary

Saint Francis University's overall employment/graduate school rate for **the Class of 2025 remains competitive at 99.6% employed or attending graduate school within 9 months of graduation.** This data includes undergraduate and graduate students who received degrees through the Shields School of Business, the School of Health Sciences and Education, the School of Science, Technology, Engineering, Arts, and Mathematics (STEAM), and the Division of Professional Studies.

Our graduates secured employment or entered graduate or professional school in high-demand occupational fields, including Health Sciences, Business, Information Technology, Engineering, Communications, Social Services, Athletics, Education, Science, and Research.

### Highlights

- 99% of graduates indicated that their internship, field experience, clinical rotations, student teaching or other experiential education experience was instrumental in obtaining full-time employment.
- 90% of the Senior class graduates completed an internship, field experience, clinical rotation, or student teaching.
- 99% of graduates reported that their employment or graduate school placement is related to their program of study at Saint Francis University.
- 89% reported that Saint Francis University was instrumental in developing their faith and/or values for life after college.
- The average annual salary range for the Class of 2025 was above \$75,000.
- Class of 2025 graduates are either employed or attending graduate school in 24 different states and 8 different countries.
- Of the Class of 2025 graduates who received a bachelor's degree and continued to graduate or professional school, 63% are studying at Saint Francis University.

---

Questions about this report, contact:

**Office of Career Services at 814-472-3019 or [careerservices@francis.edu](mailto:careerservices@francis.edu)**

## Class Placement Status

Employed	367
Full-time* (360)	
Part-time (7)	
<i>*includes military service</i>	
Graduate School Only	124
Volunteer or service program	0
Still seeking employment	2
Not seeking due to personal reasons	0

## Survey Response Overview

Class of 2025 = 534 Total Students  
Total Survey Respondents = 493  
Survey Knowledge/Response Rate = 92%

## Sample of Employers/Positions

Duke Health, Physician Assistant  
Federated Hermes, Global Investment Operations Analyst  
Fisher Investments, Account Executive  
GE Vernova Hitachi Nuclear Energy, Mechanical Component Engineer  
Jefferson Health, Department of Surgery, Director of Operations,  
Johns Hopkins Health System, Surgical ICU Registered Nurse  
Maryland Neuro-Rehab and Wellness Center, Occupational Therapist  
National Aquarium, Aquarist  
Penn State University Police, Forensic DNA Scientist  
Professional Soccer Player (Germany)  
Raytheon (aerospace & defense company), Program Cost Control Analyst  
SeaWorld Parks & Entertainment, Associate Sea Lion Trainer  
Sinai Hospital, Physical Therapist  
St. Jude Children's Research Hospital, Clinical Evaluator  
The Walt Disney Company, Cast Member  
The Watson Institute, Special Education Teacher  
U.S. Department of Defense, Secretary to the Commander (England)  
United States Department of Energy, Engineer  
University of Pittsburgh, Communications Specialist

 **99.6%**

of respondents were employed or attending graduate school within 9 months

average starting salary

**ABOVE  
\$75,000**

**98%** 

of '25 grads had a professor who made them feel excited about learning

 **99%**

of grads reported that experiential education made the difference in getting hired

View the full report, which includes data by major at [francis.edu/first-destination-report](https://francis.edu/first-destination-report)



# Class of 2025 Snapshot

## Reported Salary Ranges

Where the Majority of New Alumni Located After Graduation	
Pennsylvania	357
Maryland	19
Virginia	14
New York	12
Florida	11
South Carolina	11
Ohio	10
Outside the U.S.	8

\$0 - \$19,000	0
\$19,000 - \$24,999	1
\$25,000 - \$29,999	0
\$30,000 - \$39,999	3
\$40,000 - \$49,000	7
\$50,000 - \$59,000	8
\$60,000 - \$69,999	10
\$70,000 - \$79,000	11
\$80,000 - \$89,000	6
\$90,000 - \$99,000	5
Over \$100,000	8

(59 respondents)

## Attending Graduate School

Saint Francis University continues to be the graduate study destination of choice for its alumni, with **63% of graduate-school-bound respondents enrolling in SFU master's or doctoral programs.** (78 out of 124)

### Beyond SFU, Other Top-rated Schools Selected for Graduate Study:

Carnegie Mellon University	Michigan Technological University	University of New Hampshire
Chatham University	Temple University	University of Pittsburgh
Duquesne University	University of Delaware	University of Southern California
George Washington University	University of Maryland, Baltimore	University of Toronto
Kent State University	University of Miami	Villanova University

## Student Testimonials

I loved Saint Francis University, and the staff in the education department were amazing and helped me through my education journey.

I had a goal from sixth grade to become an engineer. Saint Francis University was instrumental in me achieving this goal. It was very hard at times, but I worked hard and was successful. This work ethic has been very important and helpful as I have been challenged at work. I look forward to many more years in the engineering field!

Saint Francis University encourages its students to help the people around them and to be the best version of themselves. When people on campus are displaying these traits, it makes the people around them want to do the same.



## Faith Formation at SFU



**89%**

reported  
strengthened  
faith

I found SFU instrumental in developing my faith and/or values for life after college.

(72 respondents)

“I started attending mass with my fiancé on campus in 2021. It deepened my faith and encouraged me to dig deeper. Now, I am becoming Catholic! I’m being confirmed this Easter.”

## Academic Support and Mentorship

I had at least one professor at SFU who made me excited about learning.

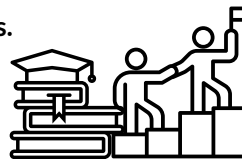
94 Respondents  
AGREE/STRONGLY AGREE: 93 (98%)

My professors at SFU cared about me as a person.

93 Respondents  
AGREE/STRONGLY AGREE: 91 (98%)

I had a mentor (professor, advisor, coach, staff member, etc.) who encouraged me to pursue my goals and dreams.

84 Respondents  
AGREE/STRONGLY AGREE: 82 (98%)



## What is the Impact of Experiential Learning Opportunities



completed an internship, field experience, clinical rotation, or student teaching experience. (293 of 327)



**Yes: 99%**

Q. Do you believe your internship, field experience, clinical rotations, student teaching or other experiential education experience was instrumental in obtaining full-time employment? (272 Respondents)

## Data by School

### Shields School of Business

	Employed	Graduate School Only	Seeking Employment	Other
Undergraduate	76%	24%	0%	0%
Graduate	100%	0%	0%	0%
Total	76%	24%	0%	0%

### School of Health Sciences and Education

	Employed	Graduate School Only	Seeking Employment	Other
Undergraduate	34%	66%	0%	0%
Graduate	98%	2%	0%	0%
Total	69%	31%	0%	0%

### School of STEAM

	Employed	Graduate School Only	Seeking Employment	Other
Undergraduate	74%	25%	1%	0%

### Division of Professional Studies

	Employed	Pursuing Next Degree Only	Seeking Employment	Other
Associate	100%	0%	0%	0%
Bachelor	94%	5%	1%	0%
Total	91%	9%	0%	0%

## Historical Overview, Five Years

	2025	2024	2023	2022	2021
<b>Number of Graduates</b>	534	573	657	615	703
<b>Knowledge/ Response Rate</b>	493 (92%)	518 (90%)	576 (88%)	528 (86%)	608 (86%)
<b>Total Employed</b>	367 (74%)	380 (73%)	440 (76%)	372 (70%)	463 (76%)
Employed Full-time	360 (98%)	370 (97%)	408 (93%)	336 (90%)	418 (90%)
Employed Part-time	7 (1%)	10 (3%)	11(2%)	8 (2%)	7 (2%)
Employed & Attending Graduate School	N/A	N/A	21 (5%)	28 (8%)	38 (8%)
<b>Attending Graduate School Only</b>	124 (25%)	135 (26%)	133 (23%)	154 (29%)	141 (23%)
<b>Seeking Employment</b>	2 (<1%)	1 (<1%)	1 (<1%)	2 (<1%)	1 (<1%)
<b>Other</b>					
Not Seeking -Personal Reasons	0 (0%)	2 (<1%)	1 (<1%)	0 (0%)	2 (<1%)
Volunteering or Service	0 (0%)	0 (<1%)	1 (<1%)	0 (0%)	1 (<1%)

## Survey Methodology

The Office of Career Services distributed a “First Destination Survey” to members of the Class of 2025, comprising 534 undergraduate and graduate students who graduated from Saint Francis University in Summer 2024, December 2024, and May 2025. Graduates received an email with a survey link and a paper copy by regular mail in October 2025. Two months later, each non-respondent was contacted again by email. Faculty, staff, advisors, and academic departments were then contacted to obtain any available post-graduation information for non-respondents. In addition to the mailings and faculty contact, follow-up emails were sent to non-respondents. Social media tools (LinkedIn, Facebook, and Instagram), Handshake, and Google searches were also used to retrieve graduate information. The survey link was also accessible to alumni at [www.francis.edu/career](http://www.francis.edu/career).

The full report (with data by major) includes a copy of the survey instrument used to capture the information contained in this executive summary.

As recommended by the National Association of Colleges and Employers (NACE), the First Destination Report focuses on undergraduate and graduate outcomes and does not include data related to certificates and certifications earned.

## On the Cover

Meet Jacob Garrity, a Saint Francis University grad who used his dual degree to land a job at Tesla, a multinational motor vehicle and clean energy company considered to be one of the most valuable corporations in the world.

Jacob earned both a B.S. in Engineering and a B.S. in Computer Science in December 2025 with a focus on robotics, machine learning, and programming languages. During his time at Saint Francis, he was also a member of the Red Flash Marching Band, Sound Storm Pep Band, and the Esports VALORANT team.

Now, Jacob is a process technician at Tesla's Gigafactory in Sparks, Nevada where he is often recognized across departments for his knowledge and skills.

"The small class sizes gave me a lot of hands-on experience that really set me apart from recent graduates from bigger schools," he says.

Read a Q&A with Jacob: [Francis.edu/blog](https://francis.edu/blog)



### Goals of Franciscan Higher Education

Franciscan Character

Humble and Generous Attitude Towards Learning

Community of Faith and Prayer

Respect for the Uniqueness of Individual Persons

Service to the Poor and Needy

Solidarity and Reconciliation

Reverence for All Life and Care of Creation

Spirit of Simplicity and Joy



Saint Francis University, inspired by its Franciscan and Catholic identity, values equality of opportunity, human dignity, racial, cultural, and ethnic diversity, both as an educational institution and as an employer.

**Nondiscrimination and No Harassment Policy:** Saint Francis University does not discriminate on the basis of gender, gender identity, age, race, color, ethnicity, religion, sexual orientation, marital status, disability, pregnancy status, veteran status, predisposing genetic characteristic or any protected classification.

The following person has been designated to handle inquiries regarding the University's non-discrimination policy: Lynne Banks, Associate Dean of Students, Title IX Coordinator, 814.472.3352, [lbanks@francis.edu](mailto:lbanks@francis.edu).