

STOKES CLUB MEMBERSHIP APPLICATION

Gift Description

Unrestricted contribution (for the areas of greatest need in the athletics program).

Restricted contribution (designate gift to be used by a specific team or program). Check below:

Men's Sports

- Basketball
- Cross Country
- Golf
- Football
- Soccer
- Tennis
- Track and Field
- Volleyball

Women's Sports

- Basketball
- Cross Country
- Field Hockey
- Golf
- Lacrosse
- Soccer
- Softball
- Swimming
- Tennis
- Track and Field
- Volleyball

Support Services/Programs

- Sports Information
- Sports Medicine
- Intramurals
- Student-Athlete Development
- Immergrun Golf Club
- Cheerleading
- Pep Band
- Stokes Club Room
- Women's Athletics
- Sports Marketing

-Please complete opposite side-



After completing both sides, please detach this panel and mail to:

**Stokes Club
Department of Athletics
Saint Francis University
P.O. Box 600
Loretto, PA 15940-0600**

For more information, call (814)-472-3286 or visit us on the web at www.francis.edu

**Stokes Club
Department of Athletics
Saint Francis University
P.O. Box 600
Loretto, PA 15940-0600**

SAINT FRANCIS UNIVERSITY



STOKES CLUB

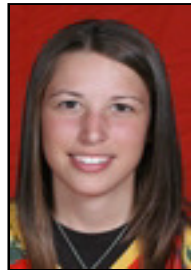


**SFU Men's Soccer
Spring semester team GPA winners 3.472
SFU Athletics overall has 19 consecutive
semesters above a 3.0**

***Support Athletic and
Academic Excellence***

STOKES CLUB

Welcome to the Stokes Club!



**ERIN REIFSTECK
SAAC PRESIDENT**

The Stokes Club is an organization of alumni and friends which provides assistance and support to student athletes participating in our 21-sport Division I Athletics Program. Our student athletes and coaches work hard to represent Saint Francis University and you in a positive manner throughout the year.

Operating costs increase significantly each year as we strive to improve facilities and opportunities for our teams. Your financial contribution will benefit the almost 400 student-athletes competing in intercollegiate athletics at Saint Francis University.

We are extremely proud of our past athletic and academic accomplishments. However, with your help we can move forward and take our programs to even greater success in the classroom, in the community and in competition. The future of Red Flash Athletics is very bright because you care about our student athletes.

Our student athletes, coaches, administrators and staff thank you for your support. Go Red Flash!

STOKES CLUB METHODS OF CONTRIBUTION

Direct Gifts, which can be in the form of cash, stocks, checks or credit cards (Visa, MasterCard) are the most common methods of contributing.

Gifts in Kind are gifts of services or valuable merchandise that can significantly assist Red Flash Athletics in day-to-day operations.

Planned Giving presents an opportunity to tailor a personal financial plan to achieve important reductions in capital gains, estate taxes or personal income.

Scholarship Endowments and Naming Opportunities are created on an individual basis.

For more information, call (814) 472-3286.

STOKES CLUB MEMBERSHIP BENEFITS

	MVP	Captain	Coach	Athletic Director	Jack Twyman	Red Flash	Life Member
Endowment/ Naming Opportunity							⚡
Plaque Recognition							⚡
Red Flash Blazer						⚡	⚡
Immergrun Golf Club Membership					1	2	2
Complimentary Season Tickets				2	2	4	4
Special Event Invitation				⚡	⚡	⚡	⚡
Red Flash Holiday Gift			⚡	⚡	⚡	⚡	⚡
Spouse Membership			⚡	⚡	⚡	⚡	⚡
Access to Stokes Pool			⚡	⚡	⚡	⚡	⚡
Premium Parking		⚡	⚡	⚡	⚡	⚡	⚡
Media Guide	⚡	⚡	⚡	⚡	⚡	⚡	⚡
Basketball Season Tix Discount	⚡	⚡	⚡	⚡	⚡	⚡	⚡
Founder's Day Dinner	⚡	⚡	⚡	⚡	⚡	⚡	⚡
Annual Meeting/ Dinner Guest	⚡	⚡	⚡	⚡	⚡	⚡	⚡
Buffet Discount	⚡	⚡	⚡	⚡	⚡	⚡	⚡
Newsletter	⚡	⚡	⚡	⚡	⚡	⚡	⚡
Lapel Pin (1st year only)	⚡	⚡	⚡	⚡	⚡	⚡	⚡
Access to Club Room	⚡	⚡	⚡	⚡	⚡	⚡	⚡
Membership Card	⚡	⚡	⚡	⚡	⚡	⚡	⚡
Post-Season Ticket Priority	⚡	⚡	⚡	⚡	⚡	⚡	⚡
Annual Meeting/Dinner	⚡	⚡	⚡	⚡	⚡	⚡	⚡
Tax Deduction	⚡	⚡	⚡	⚡	⚡	⚡	⚡
Game Program Name Recognition	⚡	⚡	⚡	⚡	⚡	⚡	⚡

Benefits subject to change. According to Internal Revenue Service regulations, the value of your contribution must be reduced by the value of the benefits you receive from your club membership. The value of each of the benefits will be provided to you.

STOKES CLUB MEMBERSHIP APPLICATION

Name: _____

Home Address: _____

City: _____ State: _____ Zip: _____

Home Phone: _____

E-Mail: _____

Name of Business: _____

Business Address: _____

City: _____ State: _____ Zip: _____

Business Phone: _____

I am joining the Stokes Club as a:

- Student-Athlete Alumnus
Graduation Year: _____ Sport: _____
- Alumnus Graduation Year: _____
- Student-Athlete Parent
- Athletics Friend
- SFU Faculty/Staff

Membership Level

- Stokes Club Life Member - \$50,000 or more
- Red Flash - \$10,000 to \$49,999
- Jack Twyman - \$2,500 to \$9,999
- Athletic Director - \$1,000 to \$2,499
- Coach - \$500 to \$999
- Captain - \$300 to \$499
- MVP - \$100 to \$299
- Spouse Membership - \$25 (with paid membership)

Amount and Method of Contribution

- Amount of contribution: \$ _____
- Cash
- Visa/MasterCard
- Signature: _____
- Credit card number: _____
- Credit card expiration date: _____
- Check payable to Saint Francis University
- My employer has a matching gift program
- Gift in Kind (subject to Athletic Dept. approval)

-Please complete opposite side-